

TESTED TO COMPLY WITH



MEETS
EN ISO:3059
Specifications

SPECTROLINE®
NDT

uVision™ 365 DELUXE SERIES



Compliant, IP Rated, Fanless LED UV-A Lamps

UV-365HC + UV-365MHC

- ▶ Fully compliant to **ASTM E3022-15**
- ▶ Fanless design maintains optimum lamp temperature using state-of-the-art heat sinks
- ▶ For use in NDT applications including aerospace
- ▶ High intensity UV-A beam for amazing fluorescent response
- ▶ Highest quality optics for superior light output



**IP65
RATED**



**Dust Tight &
Water Resistant**



**Fanless &
Cool Running**



**Lightweight
& Rugged**



3 UV-A LEDs
For wide area of coverage

Faceplate with
**INTEGRAL UV-A
PASS FILTERS**
Reduces visible wavelengths

**ADJUSTABLE
WHITE LIGHT LED**
Use to locate surface
flaws

**LONG-LASTING
UV-A LENSES**
Reduce the rate of
solarization

**SEALED CONTROL
SWITCH**
Grip-mounted, three-
way rocker switch
(white light/off/UV)

PISTOL GRIP
Comfortable,
balanced control

**POWER/BATTERY
LIFE LIGHT**
Indicates power level



**BACK
VIEW**




**WIDE, EVEN
BEAM PROFILE**



**CERTIFICATE OF
CONFORMANCE**
included with each lamp

uVision™ 365 DELUXE SERIES

MODEL	NOMINAL STEADY-STATE UV-A (365 nm) INTENSITY at 15 in (38 cm) ①	VISIBLE LIGHT MEASUREMENT	UV-A COVERAGE AREA at 15 in (38 cm) at minimum 1,200 μW/cm²	AC/DC MOBILE VERSION
UV-365HC	6,000 μW/cm²	< 1 foot-candle (11 lux)	6.4 in (16 cm) Diameter	
UV-365MHC	6,000 μW/cm²	< 1 foot-candle (11 lux)	6.4 in (16 cm) Diameter	

Light Source: (3) UV-A LEDs, (1) white light LED

Lamp Style: Pistol grip

Lamp Head Diameter: 3.5 in (9 cm)

Height: 7.5 in (19 cm)

Width: 3.5 in (8.9 cm)

Weight: 1.9 lb (0.90 kg)

White Light LED Intensity: 400 foot-candles (4,306 lux)

Power Requirements: 100-120VAC / 12VDC
(Also available in 230V & 240V versions)

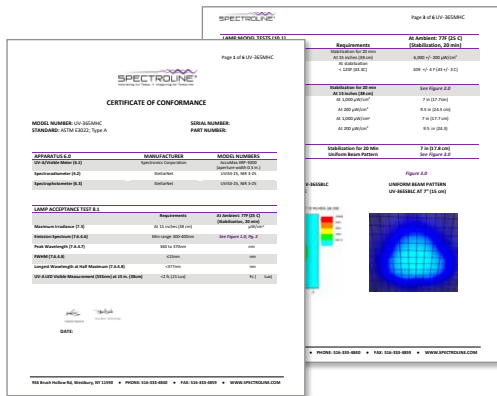
Battery Pack: Type: 12V, NiMH (rechargeable)
Run time: 3.5 hours continuous
Charge time: 2 hours

① UV-A intensity reading taken with the Spectroline® AccuMAX™ Series meter, and is factory set to the value shown.

*Each lamp is fitted with an 8-foot cord and the appropriate plug for the country of destination. An optional 20-foot cord is available. The "/20" suffix denotes the 20-foot power cord options.



CERTIFICATE OF CONFORMANCE



uVision™ 365 AC DELUXE KIT

UV-365HC

Kit Includes:

Lamp with in-line AC power supply, UV-absorbing spectacles, comes in a protective case.



uVision™ 365 AC/DC MOBILE DELUXE KIT

UV-365MHC

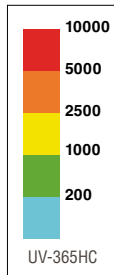
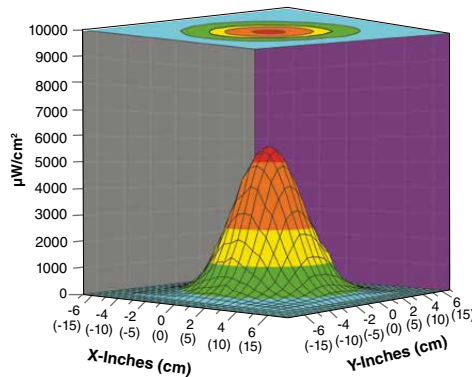
Kit Includes:

Lamp with in-line AC power supply, UV-absorbing spectacles, battery pack with 12V rechargeable NiMH battery, comes in a protective case.

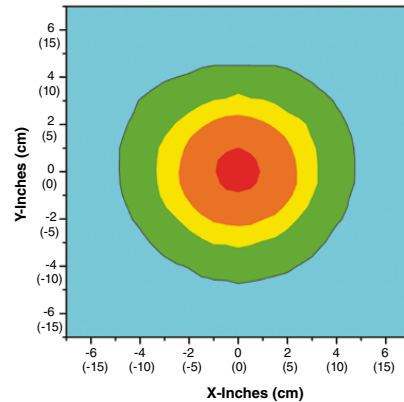


UV-A Beam Profile

Surface Contour Profile at 15 in (38 cm)



Top Intensity Profile at 15 in (38 cm)



www.spectroline.com

956 Brush Hollow Rd, Westbury, NY 11590 USA
800-274-8888 • 516-333-4840

DISTRIBUTED BY

NDT
12/17 A17361
PRINTED IN U.S.A.