

Your Eye Inside™

HAWKEYE® Q2 VIDEO BORESCOPIES

*Finally, a Hi-Resolution
Video Borescope at
a low price!*



INTECH NDE
Inspection Solutions

HAWKEYE®
Q2
HD VIDEO BORESCOPIES



HD Application Photos

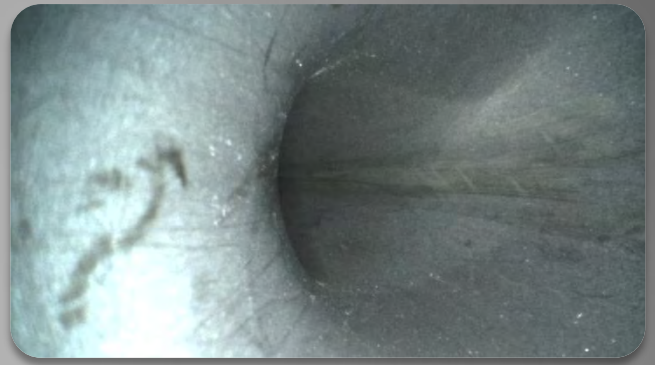


Aerospace

The Hawkeye® Q2 Video Borescopes are a seamless transition from our V2 with 6x the resolution in a more compact and portable design. The Q2 is offered in diameters ranging from .95 to 6mm, with lengths up to 7.5 meters. The Q2 features 4-way joystick articulation, 4-hour integrated battery, interchangeable insertion tubes, and a dual camera option. The Hi-Res camera sensor provides users with high-resolution images and videos which can be captured onto the micro-sd card.



Metal Casting



Tubing



Precision Welding



Manufacturing



Power Generation



Maintenance

Interchangeable Insertion Tubes, Easy-To-Use Interface

Interchangeable Insertion Tubes

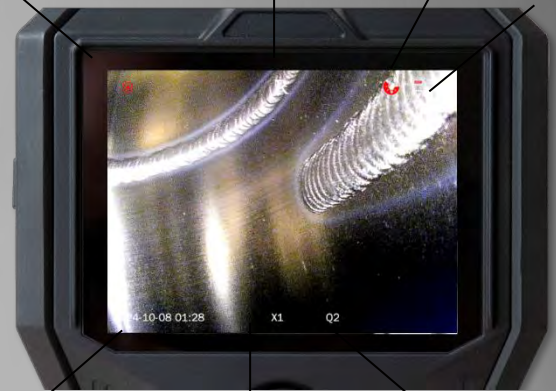
The Hawkeye® Q2 Video Borescopes interchangeable insertion tube capability is a valuable resource for customers who need a variety of length and diameters for their applications. The ease of replacement allows customers to limit downtime by not having to send tubes in for repair and change the tube on-site.



Easy-to-Use Interface

The Hawkeye® Q2 Video Borescopes incorporate an easy to navigate interface allowing customers to save time by limiting unused features. The Q2 prioritizes full resolution image and video capture, media review, zoom and image rotation.

Video Recording Timer Screen Mirroring Indicator LED Brightness
SD Card Indicator



Time and Date Stamp Magnification Annotation

On-Screen Icons



Easy-to-Use Keypad

- Power/Freeze Frame
- Image/Video Capture
- Up/Mirror/Dual View Toggle
- Menu/OK
- Down/Digital Zoom
- Return//Playback
- LED Brightness Adjustment

Hawkeye® Q2 HD Video Borescope

Diameters:
 2.8mm (.110")
 3.9mm (.154")
 6.0mm (.236")

— Durable Tungsten Sheath
 Multi-Layer Construction

— Interchangeable
 Insertion Tubes

— 5" HD
 Monitor



HD Image Sensor



Bright LED



Easily Change Tubes



IP 67

— Joystick
 Articulation

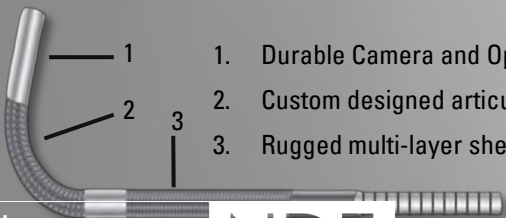
— Image & Video Capture
 Trigger Controlled

— 4-Hr Battery



INTECH NDE

Inspection Solutions



1. Durable Camera and Optics
2. Custom designed articulation collars
3. Rugged multi-layer sheathing

INTECH NDE

Inspection Solutions

Hawkeye® Q2 HD Video Borescopes List

Diameter	Length	Model #	
2.8mm (.110")	1.0 meter (3'3")	VQ2 028 1000 4	
3.9mm (.154")	1.5 meter (4'11")	VQ2 039 1500 4	
3.9mm (.154")	3.0 meter (9'10")	VQ2 039 3000 4	
6.0mm (.236")	1.5 meter (4'11")	VQ2 060 1500 4	
6.0mm (.236")	3.0 meter (9'10")	VQ2 060 3000 4	
6.0mm (.236")	7.5 meter (24'6")	VQ2 060 7500 4	

Deluxe Kits: Additional

Hawkeye® Q2 HD Specification

Hawkeye® Q2 HD Video Borescopes Specifications	
Diameter	2.8, 3.9 and 6.0mm (.110, .154 and .236")
Length	2.8mm: 1.0meter (3'3")* 3.9mm: 1.5meter (4'11") 3.0meter (9'10")* 6.0mm: 1.5meter (4'11") 3.0meter (9'10"), 7.5meter (24'6")
Articulation	1.0 – 3.0meter 150° min (+/- 10°) 7.5meter 90° (+/- 10°)
Field-of-View	2.8mm: 110° Diagonal (+/- 10°)** 3.9 and 6.0mm 100° Diagonal (+/- 10°)**
Depth-of-Field	2.8mm: 3mm - infinity 3.9mm: 8mm - infinity 6.0mm: 8mm - infinity
Direction of View	0° (90° Dedicated view available special order)
Sheath	Tungsten Braid
Camera	2.8mm: 400x400 Color CMOS 3.9mm: 1MP Color CMOS 4.5mm: 1MP Color CMOS
Display	5" HD Display
Illumination	Integrated White LED
Interfaces	HDMI, USB, Micro-SD Card
Battery	4hr run time, Rechargeable Li-Ion
Recording Media	JPEG, MPEG4
*Longer lengths available upon request ** Custom FOV options available	



Gearbox Inspection Using a
6mm VQ2 060 1500 4



Lubrication Filter Inspection Using a
3.9mm VQ2 039 1500 4

Hawkeye® Q2 Dual View HD Video Borescope

Durable Tungsten Sheath
Multi-Layer Construction

**Interchangeable
Insertion Tubes**

Diameters:
2.8mm (.110")
4.5mm (.165")
6.0mm (.236")

**5" HD
Monitor**

**Image &
Video Capture
Trigger Controlled**

**Joystick
Articulation**

**Dual View
(Straight and Side View)**

**4-Hr
Battery**



HD Image Sensor



Dual View Camera



Bright LED



Easily Change Tubes



IP 67

INTECH NDE

Inspection Solutions

Hawkeye® Q2 Dual View HD Video Borescop List			
Diameter	Length	Model #	
2.8mm (.110")	1.0 meter (3'3")	VQ2 028 1000 4DL	
4.5mm (.154")	1.5 meter (4'11")	VQ2 045 1500 4D	
4.5mm (.154")	3.0 meter (9'10")	VQ2 045 3000 4D	
6.0mm (.236")	1.5 meter (4'11")	VQ2 060 1500 4D	
6.0mm (.236")	3.0 meter (9'10")	VQ2 060 3000 4D	
6.0mm (.236")	6.0 meter (19'8")	VQ2 060 6000 4D	
6.0mm (.236")	7.5 meter (24'6")	VQ2 060 7500 4D	
Deluxe Kits: Additional \$500.00			

Hawkeye® Q2 Dual View HD Specification

Hawkeye® Q2 Dual View HD Video Borescopes Specifications	
Diameter	2.8, 4.5 and 6.0mm (.110, .177 and .236")
Length	2.8mm: 1.0meter (3'3")* 4.5mm: 1.5meter (4'11") 3.0meter (9'10")* 6.0mm: 1.5meter (4'11") 3.0meter (9'10"), 6.0meter (19'8"), 7.5meter (24'6")*
Articulation	1.0 – 3.0meter 150° min (+/- 10°) 6.0meter 100° (+/- 10°) 7.5meter 90° (+/- 10°)
Field-of-View	2.8mm: 110° Diagonal (+/- 10°)** 3.9 and 6.0mm 100° Diagonal (+/- 10°)**
Depth-of-Field	2.8mm: 0° DOV: 3mm – infinity 90° DOV: 2mm – infinity 4.5 and 6.0mm: 0° DOV: 8mm – infinity 90° DOV: 6mm - infinity
Direction of View	0 and 90° (Dual View)
Sheath	Tungsten Braid
Camera	2.8mm: 400x400 Color CMOS 4.5 and 6mm: 1MP Color CMOS (HD)
Display	5" HD Display
Illumination	2.8mm: Integrated White LED (Front) 4.5 and 6mm: Integrated White LED
Interfaces	HDMI, USB, Micro-SD Card
Battery	4hr run time, Rechargeable Li-Ion
Recording Media	JPEG, MPEG4
Weight	2.2lb (1kg)
*Longer lengths available upon request ** Custom FOV options available	



Orbital Weld Inspection Using a
4.5mm VQ2 045 1500 4D (Straight View)



Orbital Weld Inspection Using a
4.5mm VQ2 045 1500 4D (Side View)

Hawkeye® Micro Q2 Video Borescope



Durable Sheath
SS Coil or Poly

Interchangeable
Insertion Tubes

5" HD
Monitor

Image &
Video Capture
Trigger Controlled

Diameters:
.95mm (.037")
1.85mm (.072")

4-Hr
Battery



Bright LED



Side View Camera



Easily Change Tubes



IP 67

Hawkeye® Micro Q2 Video Borescope List

Diameter	Length	Direction of View	Model #
.95mm (.037")	1.0 meter (3'3")	0°	VQ2 009 1000 NA
1.85mm (.072")	1.0 meter (9'10")	0°	VQ2 018 1000 NA
1.85mm (.072")	3.0 meter (4'11")	0°	VQ2 018 3000 NA
1.85mm (.072")	1.0 meter (9'10")	90°	VQ2 018 1009 NL
1.85mm (.072")	3.0 meter (19'8")	90°	VQ2 018 3009 NL

Deluxe Kits: Additional \$500.00

Hawkeye® Micro Q2 Specification

Hawkeye® Micro Q2 Video Borescopes Specifications

Diameter	.95mm (.037") 1.85mm (.072") (+.1/- .05)
Length	.95mm: 1.0 meter (3'3") 1.85mm: 1.0meter (3'3") 3.0meter (9'10")*
Articulation	N/A
Field-of-View	120° Diagonal (+/- 10°)**
Depth-of-Field	1mm – 20mm
Direction of View	.95mm: 0° 1.85mm 0° or 90°
Sheath	.95mm: Stainless Steel Spring Coil or Polyamide 1.85mm: Tungsten
Camera	400x400 Color CMOS
Display	5" HD Display
Illumination	Integrated White LED
Interfaces	HDMI, USB, Micro-SD Card
Battery	4hr run time, Rechargeable Li-Ion
Recording Media	JPEG, MPEG4
Weight	2.2lb (1kg)

*Longer lengths available upon request

** Custom FOV options available



Medical Device Inspection Using
a .95mm VQ2 009 1000 NAP



Metal Machined Cross Hole
Inspection Using a 1.8mm VQ2
018 1000 NA



Stainless 1/3" Tube Orbital Weld
Inspection using a .95mm VQ2
009 1000 NA

INTECH NDE

Inspection Solutions

Kits & Accessories... Everything You Need!



Q2 Spare Battery

The Hawkeye® Q2 Video Borescopes has a 4-Hour battery life. Customers often purchase additional batteries to ensure they can always keep a spare battery fully charged.

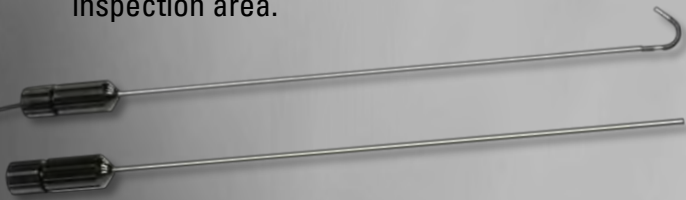
Q2 Tilt Magnet Mount

The Hawkeye® Q2 Video Borescopes tilt mount allows customers on bench tops or in the shop who have access to metal cabinets or stands to easily mount the Q2. The Q2 has a ¼" female thread for standard mounts.



Q2 Video Borescope Rigidizers

When you push a flexible borescope through a hole into a large open cavity it can be difficult to orient and direct the scope tip. The Hawkeye videoscope rigidizer tube allows the user to easily direct the scope tip to the desired inspection area.



Standard Q2 Kits Include:

- Hawkeye® Q2 Video Borescope
- Micro SD Card
- HDMI Cable
- USB Media/Charging Cable
- USB Charging Cube
- USB Micro SD Card Reader
- Rugged Storage Carrying Case

Deluxe Q2 Kits Also Include:

- Spare Q2 Battery
- Rigidizer Tube
- Utility Magnet Tilt Mount



Hawkeye® Q2 Video Borescopes Accessories List

Item #	Description	
VQ2-BATT	Spare Battery for Hawkeye Q2 Video Borescope	
VQ2-TMM	Tilt Magnet Mount for Hawkeye Q2 Video Borescope	
VQ2-RT4	Rigidizer Tube for 3.9mm Q2 17" Length	
VQ2-RT45	Rigidizer Tube for 4.5mm Q2 17" Length	
VQ2-RT6	Rigidizer Tube for 6.0mm Q2 17" Length	
VQ2-HOST	Replacement Host for Q2 Video Borescope	
VQ2-CASE	Replacement Case for Q2 (Under 6 meter)	
VQ2-CASEL	Replacement Case for Q2 (Over 6 meter)	

Environmental Specification

Hawkeye® Q2 Video Borescopes Environmental Specifications

Operating Temp	Probe: - 20 to +60C (-4 to +140 F) : Display Unit: -10to +50C (14 to +122F)
Storage Temp	- 20 to + 60 C (-4 to +140 F)
Environmental	Sheath: IP67***, Host: IP54
Operating Temp	Probe: - 20 to +60C (-4 to +140 F) : Display Unit: -10to +50C (14 to +122F)
Humidity	5-95% Relative Humidity
Sheath Fluid Resistance	Resistance to water up to 5% salinity and most oils (except hydraulic fluid)
Compliance	FCC, CE, ROHS

***Stainless Steel Spring Coil Sheathing is not IP67. Splash resistant
Hawkeye Borescopes provides no guarantee without a specific material test.

INTECH NDE

Inspection Solutions

